



# TESTCLASH

**Automation vs. Exploration**

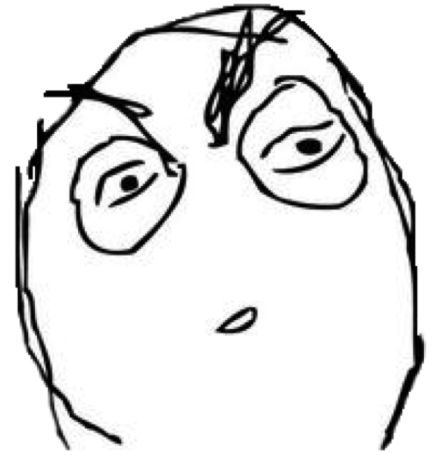


**Agile, Testing & DevOps Showcase**  
**31 January 2019, Amsterdam**

**Improve**  
QUALITY SERVICES

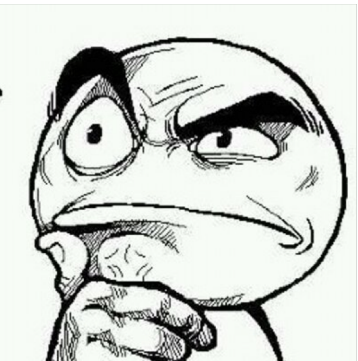
**Pieter Withaar**  
**Huib Schoots**

# Problem



But who is going to test  
the tests of the tests?

It's hard to find the right balance  
between automation and exploration



# Some misconceptions & common problems

- All testing can be automated
- Automation replaces testers
- Fixation on regression testing
- Automation OR Exploration
- Automation needs to be repeatable
- Automation needs to be repeatable
- Automation needs to be repeatable
- Test automation and testing is lame for testers

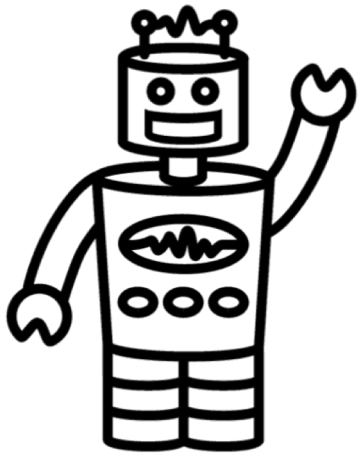


# Cases

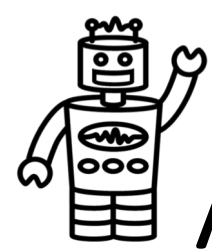
- We will present short cases from our experience
- What solution would you chose: automate or explore?

← Go the left of the room if you chose Automation

Go the right of the room if you chose Exploration →

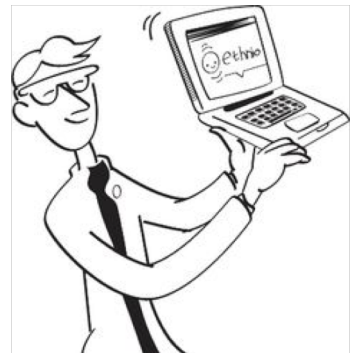


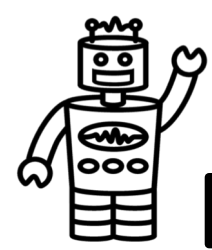




# A11y (accessibility)

- **Accessibility Testing** is defined as a type of Software **Testing** performed to ensure that the application being tested is usable by people with disabilities like visually impaired, colour blindness, old age and other disadvantaged groups.

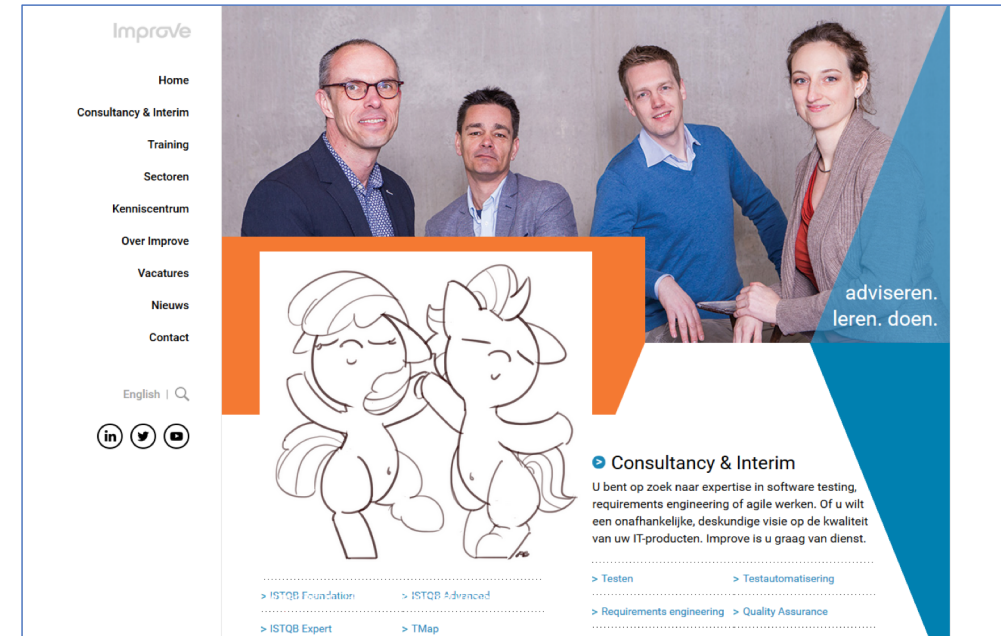
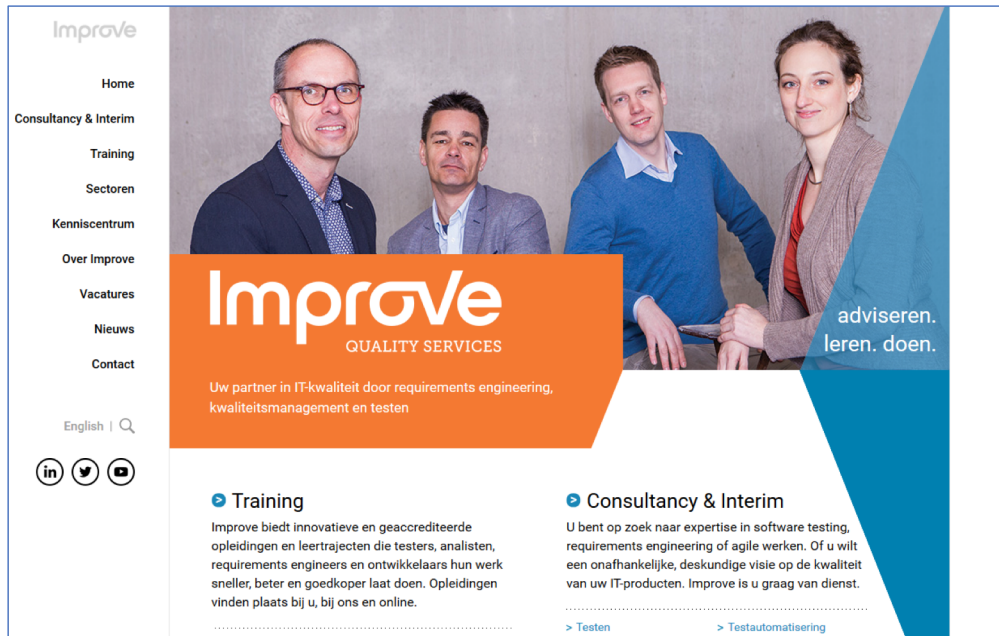


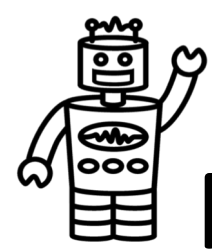


# Dancing ponies



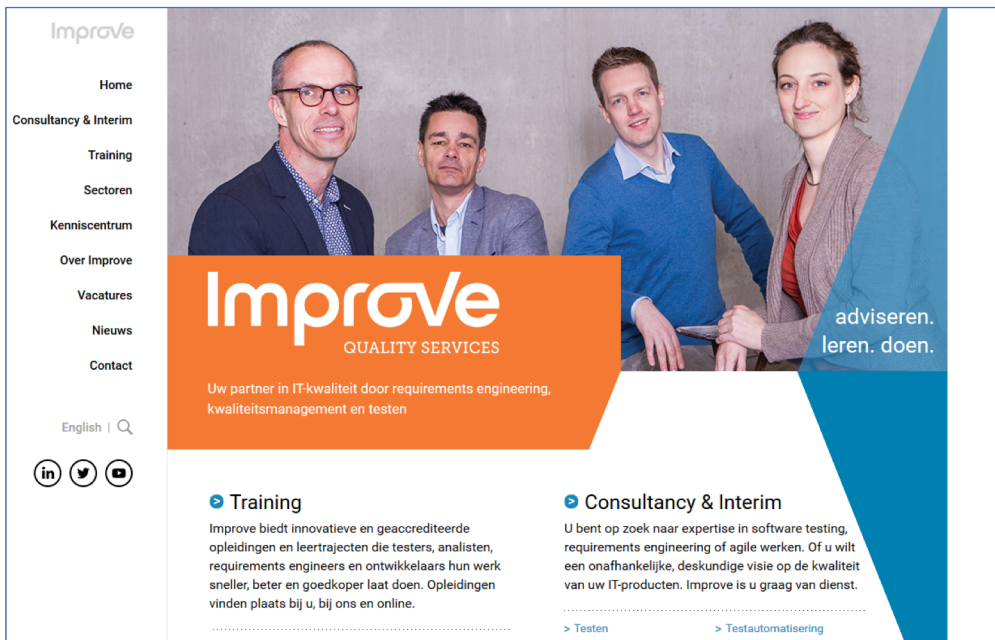
- Dancing ponies, when a developer or tester puts a configuration or a feature in testing that should not be in production. For example, a nice dancing pony picture as our logo.

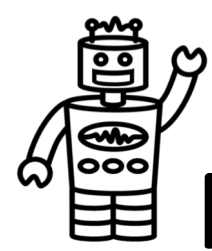




# Responsive web design

- Responsive web design is an approach to web design that makes web pages render well on a variety of devices and window or screen sizes.



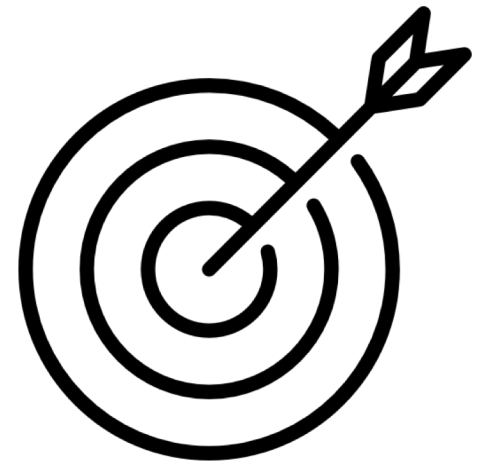


# Functional regression

- **Regression Testing** is defined as a type of software testing to confirm that a recent program or code change has not adversely affected existing features.



# Solutions



- Automation in test is a test design & strategy challenge
- Testability enables checking and exploration
- It's a continuous process with several solutions
- Collaboration is key

**You will need both Automation & Exploration!**

*exploration enables automation*

*automation enables exploration*





## **Pieter Withaar**

pieter.withaar@improveqs.nl

+ 31 (0) 6 – 27 45 84 68



## **Huib Schoots**

huib.schoots@improveqs.nl

+31 (0) 6 – 24 64 10 33



**Improve**  
QUALITY SERVICES